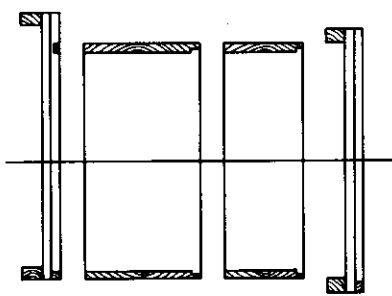


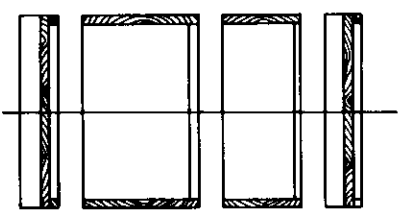
NOTE: DIAGRAM ABOVE SHOWS HOW ONE HIVE CAN BE CUT FROM A 1x12 AND A 1x8, BOTH 10' LONG, AND A 2x2 6' LONG. (1/8" FOR SAW CUT)

EXPLODED TOP, T-1, T-2, THE TWO T-3'S, T-4, AND THE TWO T-5 PIECES ARE ASSEMBLED TO FORM THE TOP.



SECTION A

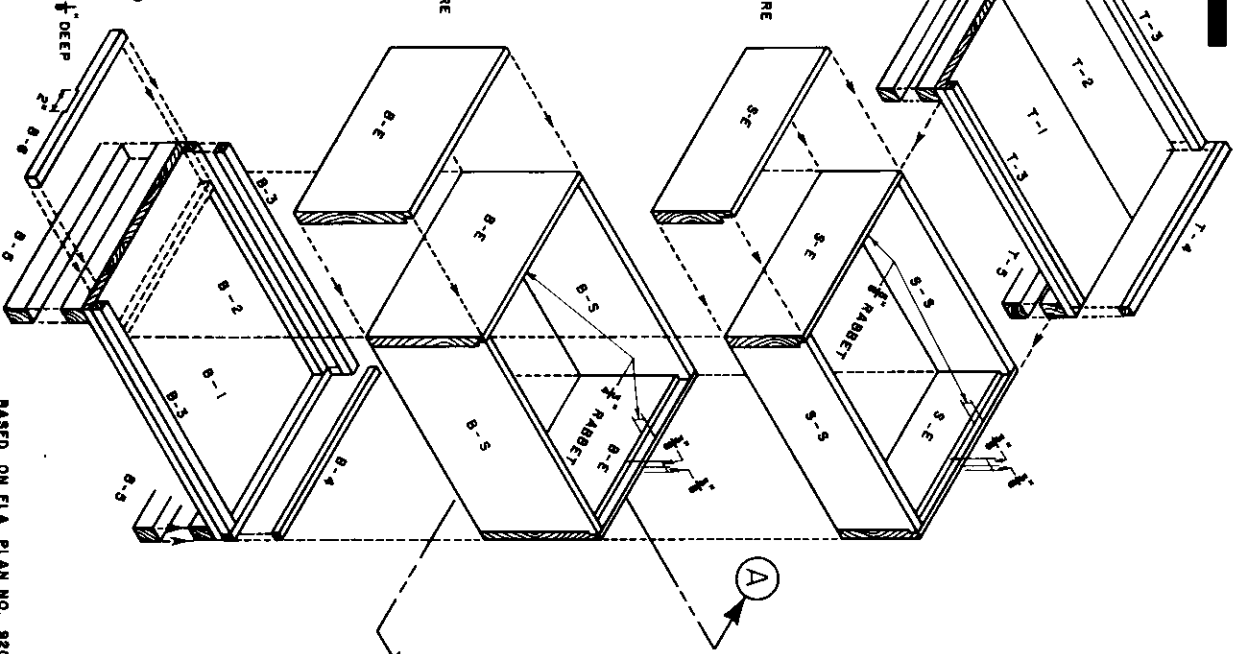
SHALLOW SUPER
EXPLODED END VIEW. ENDS AND SIDES ARE ASSEMBLED INTO ONE SOLID FRAME.



SECTION B

BROOD BODY
EXPLODED END VIEW. ENDS AND SIDES ARE ASSEMBLED INTO ONE SOLID FRAME.

EXPLODED BOTTOM. B-1 AND B-2 ARE FASTENED AT EACH END TO A B-5 PART. A B-3 PART IS ATTACHED TO EACH SIDE, BUTTING UP TO B-4 AT THE END. B-6 IS LOCATED BETWEEN THE B-3'S AND DIRECTLY BELOW BROOD BODY END AS SHOWN.



MEANING OF SYMBOLS	
B	BOTTOM
T	TOP
-E	END
-S	SIDE
B-	BROOD BODY
S-	SHALLOW SUPER

SCHEDULE OF PARTS		
SYMBOL	AMOUNT	DIMENSIONS (INCHES)
T-1	1	3/4 x 9 5/8 x 22 3/8
T-2	1	3/4 x 6 5/8 x 22 3/8
T-3	2	3/4 x 3/4 x 21 5/8
T-4	1	3/4 x 3/4 x 16 1/4
T-5	2	1 1/8 x 1 1/2 x 16 1/4
B-1	2	3/4 x 6 5/8 x 19 1/8
B-2	2	3/4 x 6 5/8 x 16 1/4
B-3	2	3/4 x 9 5/8 x 16 1/4
B-4	2	3/4 x 9 5/8 x 16 1/4
B-5	1	3/4 x 9 5/8 x 22 1/2
B-6	1	3/4 x 6 5/8 x 22 1/2
B-3	2	3/4 x 3/4 x 21 5/8
B-4	2	3/4 x 3/4 x 16 1/4
B-5	2	1 1/8 x 1 1/2 x 16 1/4
B-6	1	3/4 x 3/4 x 14 3/4



BASED ON FLA. PLAN NO. 820

COOPERATIVE EXTENSION WORK IN
AGRICULTURE AND HOME ECONOMICS

UNITED STATES DEPARTMENT OF AGRICULTURE COOPERATING
WITH THE

LOW COST BEEHIVE

USDA 180 EX. 6324 SHEET 1 OF 1